

Eastside Neighborhood Survey Summary of 2009 Findings

This survey was conducted by
North Coastal Prevention Coalition and Vista Community Clinic
as part of a grant funded by the California Endowment.



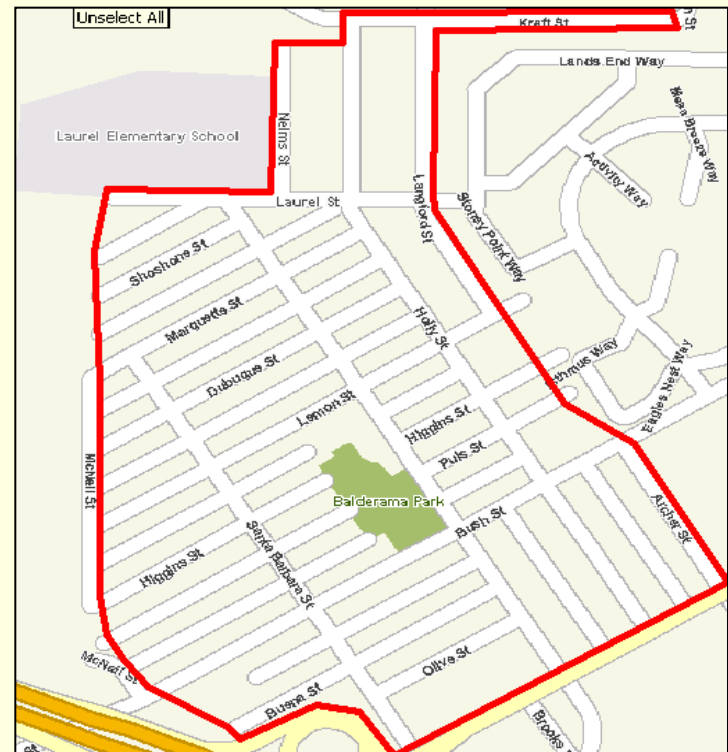
Overview

The Eastside Neighborhood Association (ENA) conducted the Household Survey of the Eastside Neighborhood in the City of Oceanside on Saturday, August 29, 2009

- The biennial survey assessed community concerns and asked if residents have seen improvements in public safety in the past 2 years
- The door-to-door household survey was conducted by ENA volunteers in English and Spanish

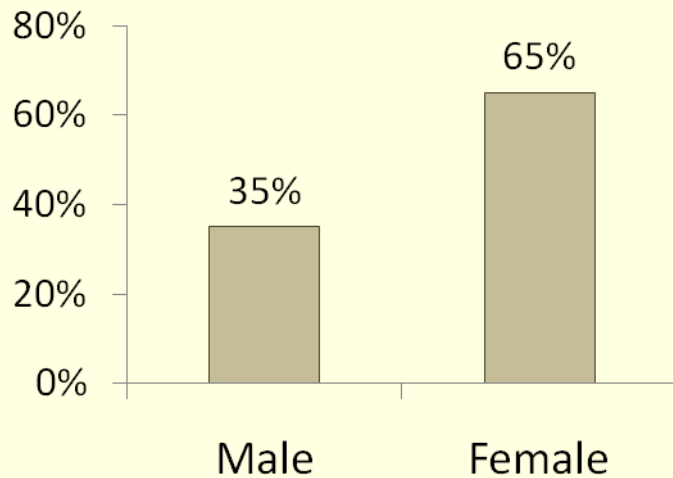
Survey Administration

- ENA volunteers were trained on survey administration
- 17 volunteers went door-to-door in teams of 2
- Systematic sampling
 - Every third house was asked to take the survey
- 102 surveys were completed in Eastside Neighborhood

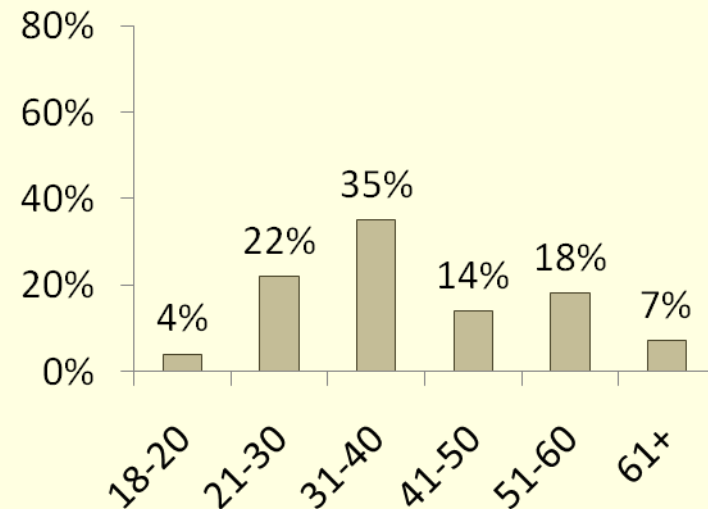


Demographics of Respondents

Gender

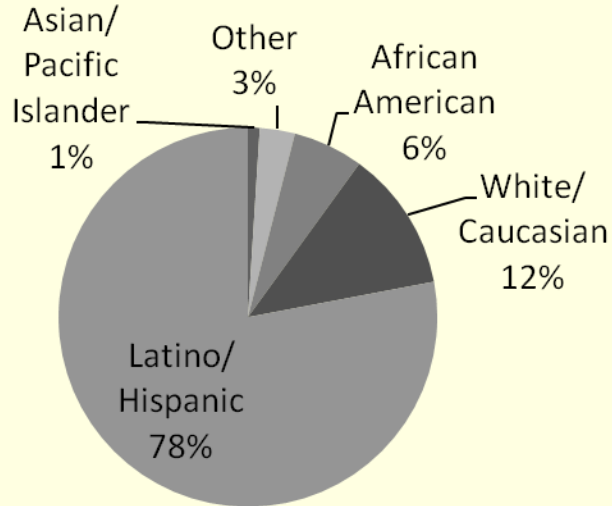


Age

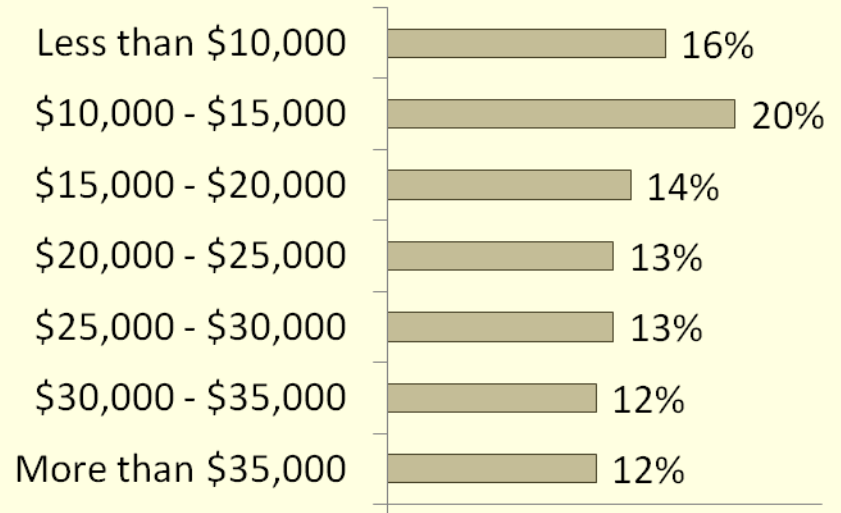


Demographics of Respondents

Ethnicity



Household Income



Demographics of Respondents

- Average household size = 4.3 persons
- 75% of respondents have children:
 - Average # of children* = 2.3
 - 56% ages 0-9, 28% ages 10-18, and 16% over 19
- 53% rent and 47% own their current home
- Stable residential patterns as 78% have lived there 3 or more years and 88% don't plan to move soon

* Average number of children per households with children

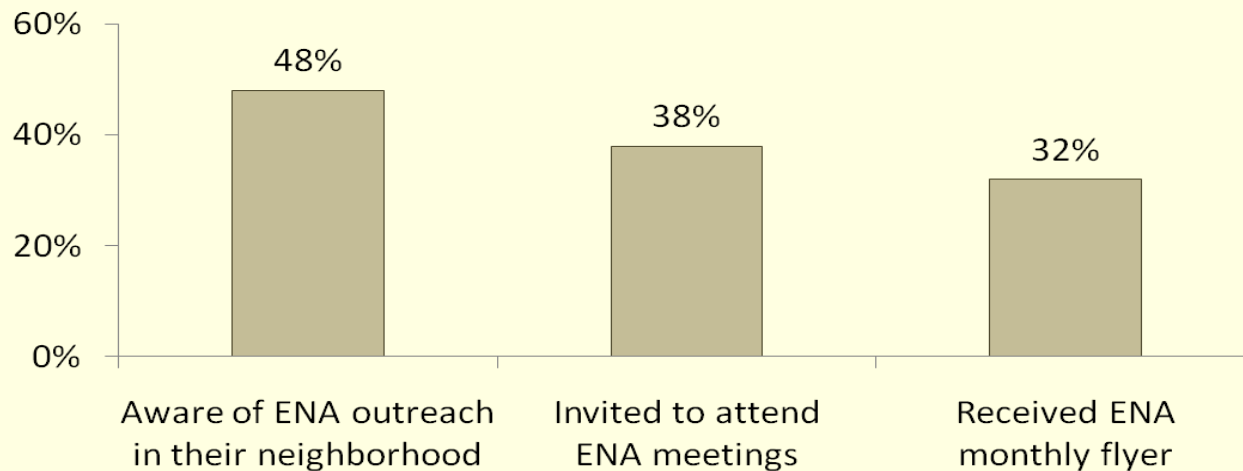
Key Findings

Community Awareness & Involvement

- 62% of respondents were aware of improvements made in their community in the last 24 months
- Nearly half (45%) had heard of ENA
 - Similarly, 45% knew there were people working to improve their community
- 43% attended ENA sponsored events at Joe Balderrama Park (i.e., Dia Del Nino, La Posada, National Night Out)
- 27% attended a community meeting or collaborated with the ENA

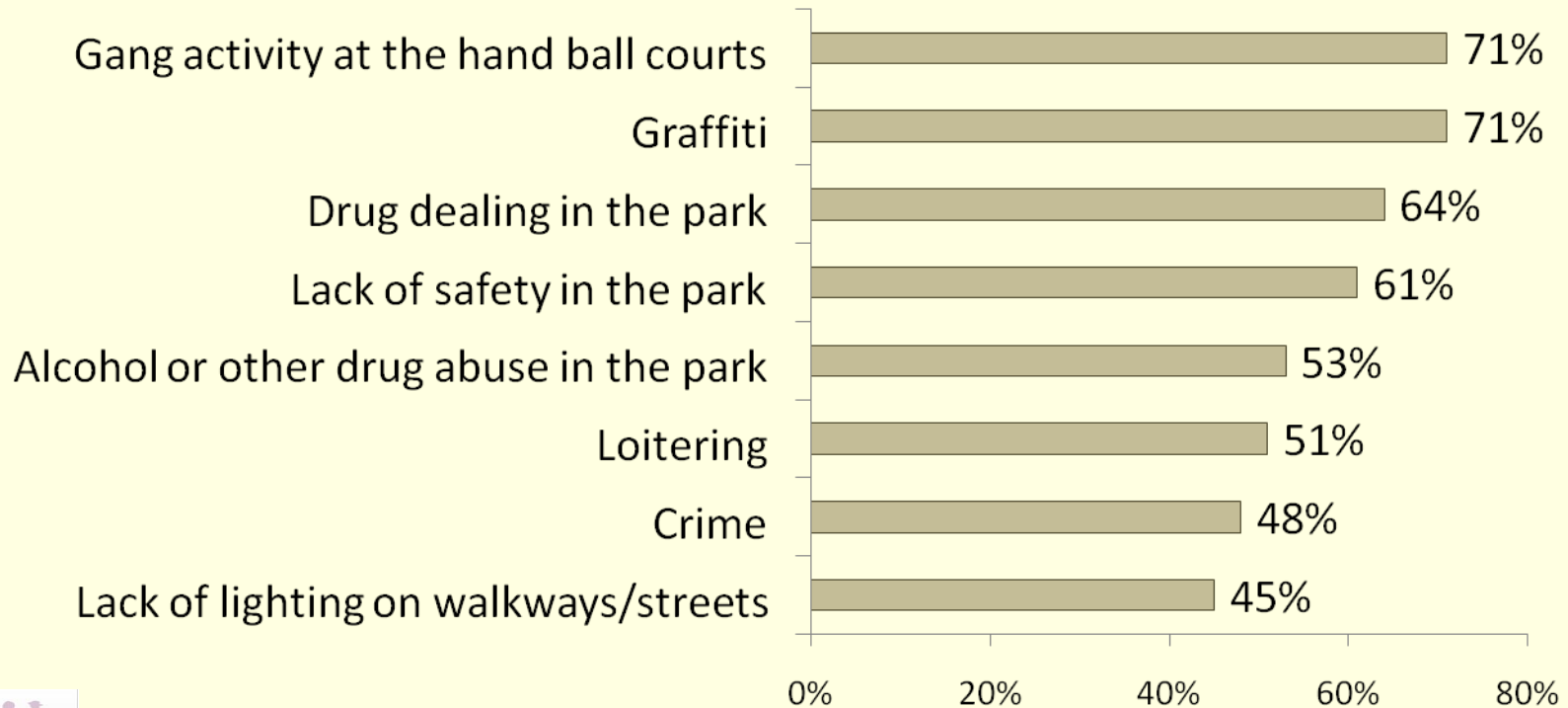
ENA Outreach

- Nearly half (48%) of the respondents were aware of ENA outreach efforts with some remembering meeting invitations (38%) and/or monthly flyers (32%)



Neighborhood Concerns

- Top concerns were gang activity at the hand ball courts in the park (71%), graffiti (71%), and drug dealing in the park (64%)



Changes in the Last 24 Months

Improvements	% Who Agree/ Strongly Agree
There are more positive events in the park	88%
Support from the police department has improved	78%
Crime has decreased	78%
It is safer to walk in the streets today than 2 years ago	76%
Support from City officials has improved	75%
There are not as many people loitering in the park	67%
Public lighting has increased	64%
There is less alcohol or other drug abuse in the park	62%
There is not as much graffiti	62%
There is less drug dealing in the park	60%
It is harder for youth to get alcohol	54%

Additional Changes

- 8 respondents mentioned gang activity
 - 6 reported positive change (less gang members/activity)
 - 2 mentioned negative change (more gangs)

- 3 respondents reported “cleaner” neighborhood/streets

Support for Increasing Safety

Strategies for Increasing Safety	% Who Agree/ Strongly Agree
Offer additional positive activities in the park	95%
Sponsor community clean up activities	93%
Increase curfew enforcement	92%
Provide parenting classes in the neighborhood	92%
Provide more opportunities for youth	92%
Increase code enforcement	92%
Increase gang injunction enforcement by police department	91%
Increase patrols in the park by police department	91%
Improve communication between police department and parents to prevent juvenile delinquency	89%
Remove hand ball courts from the park to reduce safety concerns	79%

Additional Comments

- Respondents also said that their neighborhood needs:
 - Greater noise control
 - More police patrol
 - Stronger curfew enforcement
 - A program to control rental criteria
 - A mentor program for children from disadvantaged areas/
dysfunctional families
 - A stop sign at the end of Lemon/Langford
 - More lighting on Lemon Street

Summary of Survey Findings

- Met the sample size goal of 100 surveys
- About half of the respondents were aware of ENA outreach efforts
- The majority have seen positive changes in the community in the last 24 months
- Community concerns mentioned most were gang activity at the hand ball courts, graffiti, drug dealing at the park, and lack of safety at the park
- Most respondents showed strong support for continuing to increase neighborhood safety using various strategies

Next Steps: Discuss Interventions

- What community prevention interventions would best address the top concerns identified in the community assessment data?
 - Top concerns from door-knocking activity and survey:
 - Safety, gang activity in handball courts, drug dealing in the park, graffiti, and crime
 - Interventions supported by the community:
 - More positive activities in the park; clean up activities
 - Increased curfew, gang injunction, and/or code enforcement
 - Increased patrols in park by police department
 - Improved communication between police and parents
 - Remove handball courts in park

Next Steps: Select Interventions

- List possible community prevention interventions that address the concerns identified in the needs assessment
- Assess possible community prevention interventions
 - Is it realistic to achieve these interventions this year?
 - As a result of these interventions, can improvements in the community be measured this year?
- Prioritize three community prevention interventions
- Develop a strategic action plan for implementing the community prevention interventions

Questions & Comments

For additional information, please contact
Program Manager Erica Leary at 760-631-5000
ext. 7150 or www.vistacommunityclinic.org